



INTRACOM

netMod



Connecting to the Internet

CONNECTING TO THE INTERNET

Required Settings

Once you have netMod installed correctly you can use it to be connected to the Internet. To do so you must have an account to an Internet provider for ISDN Internet access.

! You need an Internet access account via dial-up ISDN. The old simple dial-up account will not operate.

In order to add your new ISDN Internet connection open the <Dial-Up Networking> item in <Accessories> menu. If such an item does not exist, you should install it from your Windows' 95 CD-ROM. For further information on this subject, please refer to your Windows' 95 manual. The first time you run <Dial-Up Networking> a window like the following will appear:

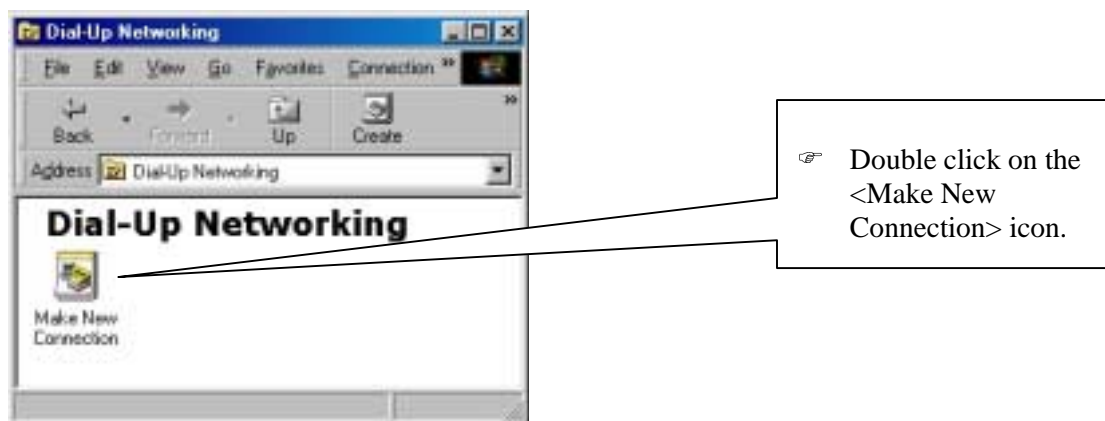


Figure 1 Dial-Up Networking

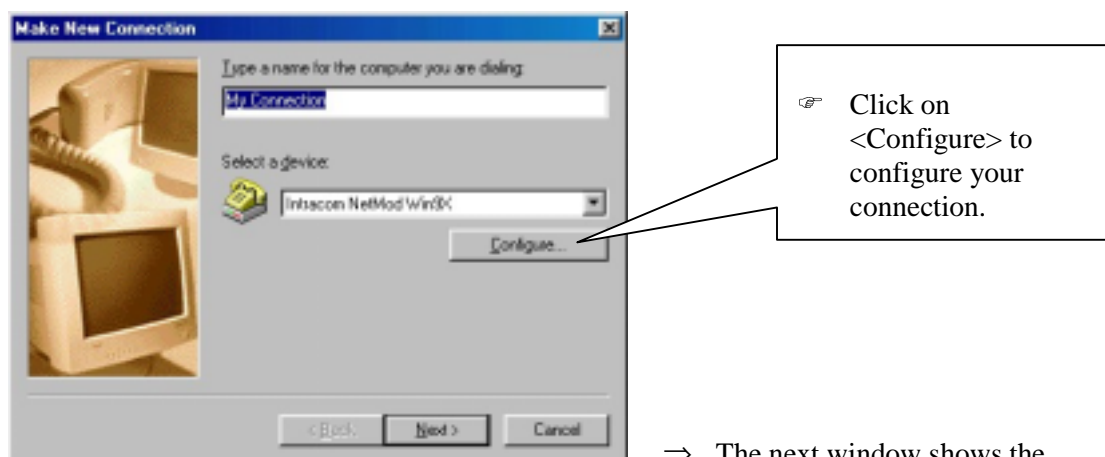


Figure 2 Make New Connection

⇒ The next window shows the connection port.



If there are some discrepancies between the values of the window on your screen and this window, set the correct values accordingly.

Figure 3 Intracom netMod WinX9 Properties

Do the same for the <Connection> and <Options> tabs.

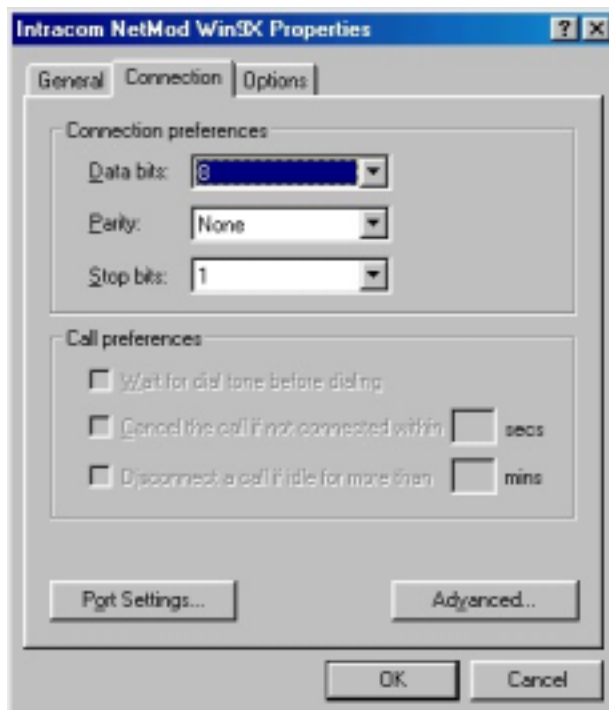
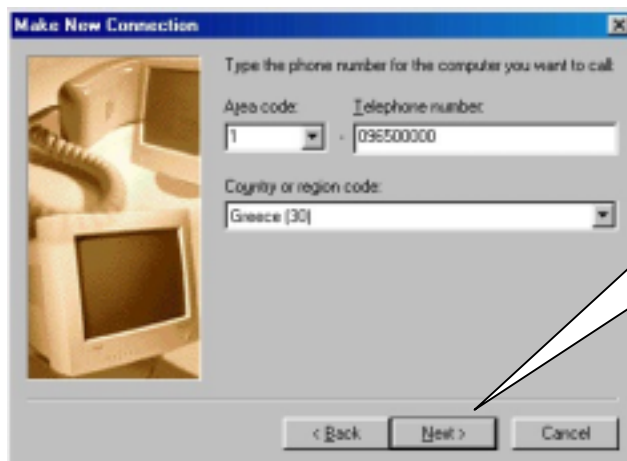


Figure 4 Intracom netMod WinX9 Properties



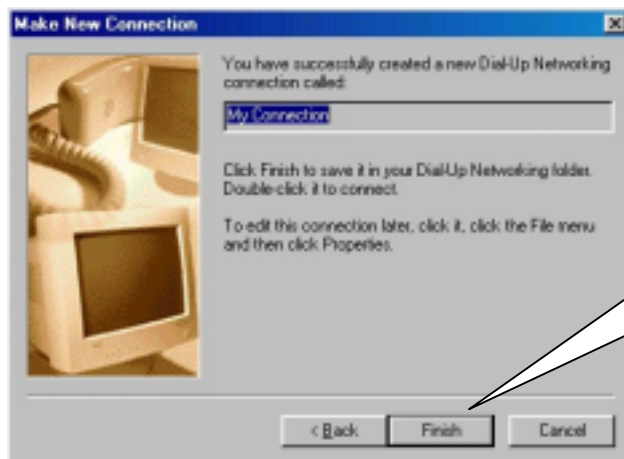
Figure 5 Intracom netMod Win9X Properties

☞ If you have finished, click <OK> to return to the initial window <Make New Connection> and click <Next>. The next window will appear on your screen:



☞ Enter the country code, the area code and the calling number with the correct values, corresponding to your Internet Service Provider. Click <Next> to continue.

Figure 6 Make New Connection



In the last window click **<Finish>**. Your new connection has been added to the **<Dial-Up Networking>** window.

Figure 7 Make New Connection



To activate your new connection double click on the **<My Connection>** icon.

Figure 8 Dial-Up Networking

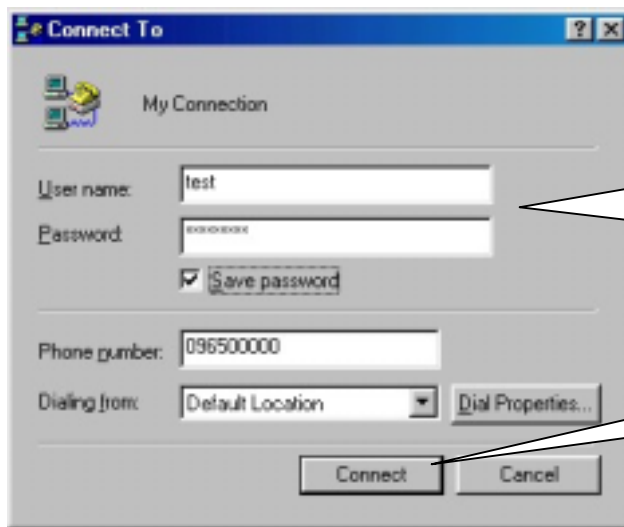


Figure 9 Connect To

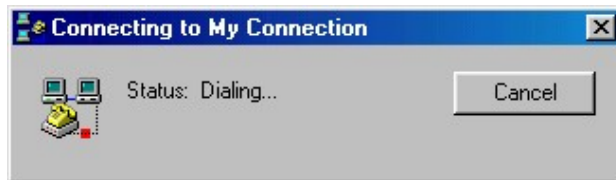


Figure 10 Connecting to My Connection

⇒ If all the above steps have been followed correctly your computer will soon be connected to the Internet and you will be able to run a **WWW browser**, an FTP (File Transfer Protocol) program or any other Internet application.