



INTRACOM

netMod



**Connecting to the Internet using
PPP or ML-PPP Protocol**

Connecting to the Internet using PPP or ML-PPP Protocol

For the connection to an Internet Service Provider (ISP) with the appropriate ISDN equipment, anything mentioned above remains valid. In the last netMod's software version, is presumed that the ML-PPP connection to the Internet Service Provider is deactivated. If the subscriber wishes to use both B-channels for the connection, he / she has to give the command atb0 to netMod and to make it negotiate the ML-PPP.

- ! **Before you activate this service, it is important to be registered as Internet subscriber at 128kbps, and to be sure that the ISP supports connection with the use of the ML-PPP protocol.**
- ! **PPP indicates maximum transmission data rate of 64kbps, therefore, only one B-channel is used.**
- ! **ML-PPP indicates maximum transmission data rate at 128kbps, therefore, both B-channels are used, but only when it is required by the transmitted data volume.**
- ! **If you are connected to the Internet at 128kbps using both B-channels and you receive an incoming call for an analogue telephone, then one of the two channels is released to answer this call. Moreover, if you wish to make a call from an analogue telephone, then one (of the two) channel is released from the Internet connection.**

In case of connection, the H/W flow control has to be activated in the computer's data port used for the connection to **netMod**.

The way of activation / deactivation of **ML-PPP** through the **<Dial Up Networking>** of **Windows' 95/98**, is described below.

- ☞ Having created a connection using the **<Dial-Up Networking>** from the **<Accessories>** windows menu, you can **activate / deactivate** the **ML-PPP** when you access the Internet.
- ☞ Open the **<Dial-Up Networking>** window, choose the connection **<My Connection>** that you have created and press the right mouse button. From the menu that appears, select the **<Properties>**.
- ☞ On the window that appears, select the **<Connection>** page.

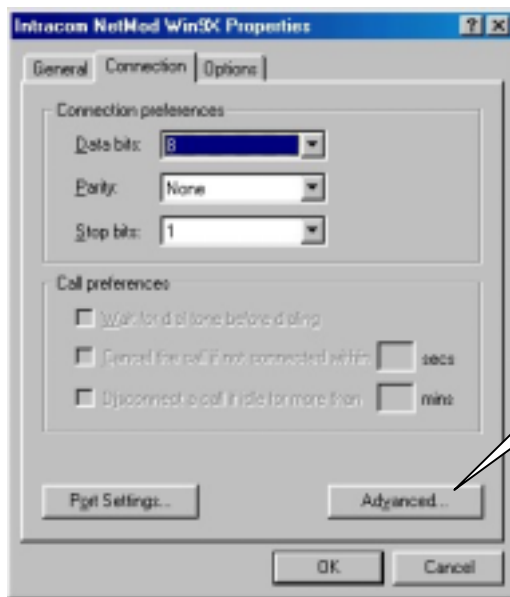


Figure 1 Intracom netMod Win9X Properties

Click on <Advanced>.

⇒ The next window will appear on your screen:

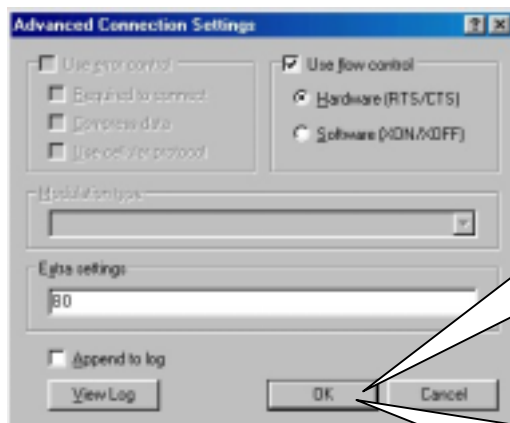


Figure 2 Advanced Connection Settings

In the <Extra Settings> field enter the *b0* command and click on <OK>, if you want to activate the ML-PPP and use data rates of 128kbps, whenever needed for your Internet connection.

or

In the <Extra Settings> field enter the *b40* command and then click on <OK> to deactivate the ML-PPP and use the simple PPP with data rates of 64kbps for your Internet connection.

- ! In order to avoid extra meaningless charges, it is suggested to the subscribers of 64kbps to give the b40 command in the area of Extra Settings, when they access the Internet.**
- ! The b0 command should be given only when your Internet access rate is of 128kbps.**

In case of a ML-PPP connection, the second B channel is added or subtracted according to the transferred data rate (Bandwidth On Demand). When you use a B-channel and the data rate exceeds a limit for a specific time period, the second B-channel will be added to the connection. On the other hand, when both B-channels are used and the rate drops below the limit for a specific time period, the second B-channel will be subtracted from the connection. The limits of this rate for the addition / subtraction of B-channel, as well as the time period for which the rate has to be above / below these limits, so that the B-channel can be added / subtracted, are defined through AT Commands.