



INTRACOM

netMod



Installation instructions for Mac OSX

Apple® Macintosh

Table of Contents

Introduction.....	2
About USB.....	2
About netMod USB.....	2
Conventions used in this manual.....	3
Standard Accessories.....	3
Before installation.....	4
Installation instructions for Mac OSX.....	4
Modem Selection and setup.....	5
TCP/IP and PPP settings.....	6
Connect to the Internet.....	8

Introduction

About USB...



USB (Universal Serial Bus) is a standard developed by computer and telecommunication industry for connection of peripheral devices to personal computers. USB devices offer high data rates and use a standard port and connector. They are configured automatically as soon as they are attached to the computer. No cards installation by opening the computer case is needed anymore. USB devices can be attached or removed while the computer is running. In the near future, USB port is going to replace the communication ports (like parallel, RS232 etc.).

About netMod USB



Figure 1 netMod USB

The *netMod USB* supports the Plug and Play functions of the USB standard and works with many operating systems such as *Windows[®]98*, *Windows[®]2000*, *Windows[®]ME*, Linux, MacOS.

The *netMod USB* has the same functions as the *netMod* for serial port connection.

Conventions used in this manual

☞ ... indicates instructions to be carried out by the user

⇒ ... indicates the results of instructions

! ... indicates notes or recommendations for the user

Names of devices, accessories, products etc. are written *italic*, e.g.: *netMod USB*

Text to be entered by the user is written ***italic bold***, e.g.: ***make xconfig*** <Enter >

Keys to be pressed on the keyboard are depicted as <key>, e.g.: <Enter >

Standard Accessories

- | | |
|------------------------------------------|-------------------------------------------------------|
| 1. <i>netMod USB</i> | 5. <i>RS-232 cable</i> (serial cable) |
| 2. <i>USB cable</i> | 6. <i>Wall mounting Kit</i> |
| 3. <i>Serial Adapter</i> (DP-9 to DB-25) | 7. <i>netMod Manual</i> |
| 4. <i>RJ-11 cable</i> (for POTS) | <i>CD-ROM netMod Installation & Configuration</i> |



Figure 2 netMod USB Accessories

Before installation...

- ! Make sure that *Windows*[®]98 is installed on your PC
- ! Make sure that for the driver installation you have the *netMod USB Driver for Windows*[®]98 available on your PC or on CD or floppy disk.

You find the *netMod USB Driver for Windows*[®]98....

- ... on the *CD-ROM netMod Installation & Configuration* (⇒ Standard Accessories) in the folder *drivers*.

or:

- on the website *INTRACOM Helpdesk netMod* (<http://netmod.intracom.gr/>) from where you can download the driver files to your PC.

Installation instructions for Mac OSX

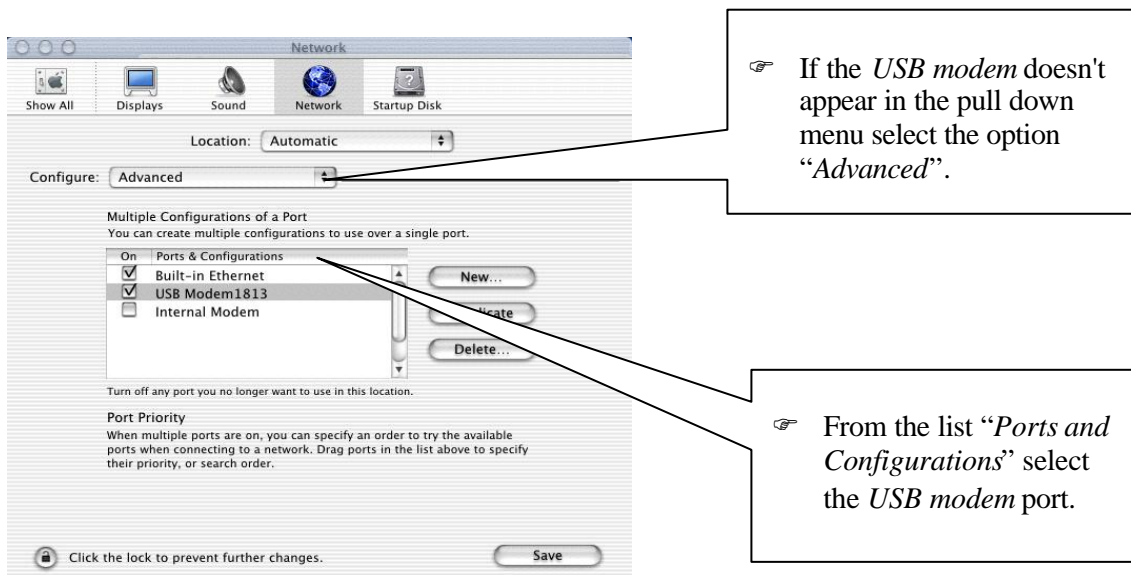
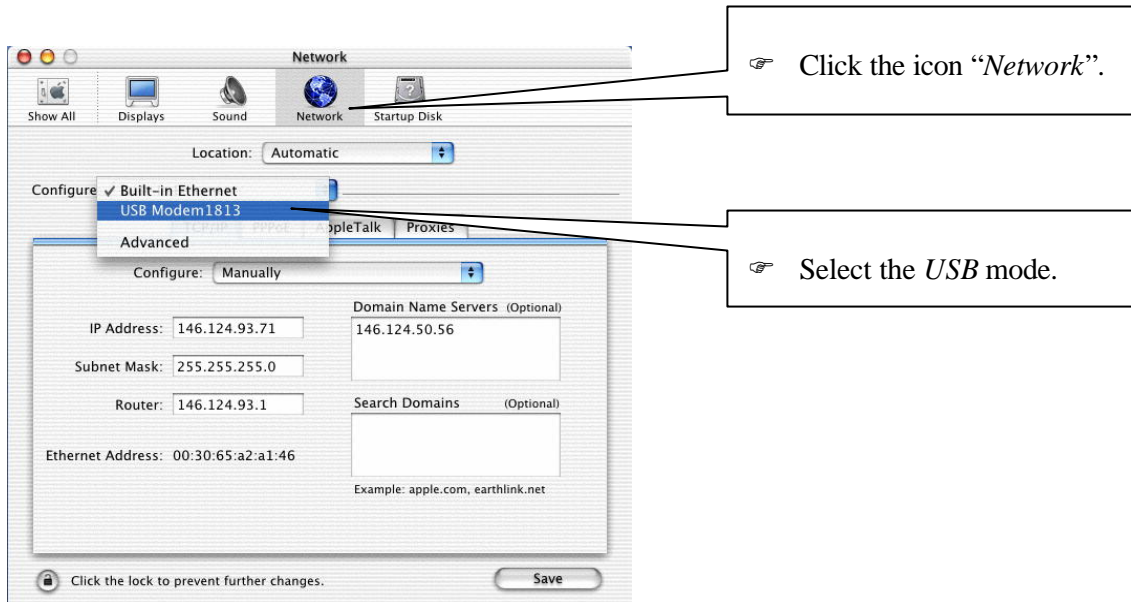
In order to be able to install the USB netMod you need the Modem Scripts from the Installation CD. You can find them under “<CD drive>:\all_downloads\scripts” directory. Unpack the files and place the modem scripts to your “Modem Scripts” folder (under: /Library/Modem Scripts). Please make sure that netMod is plugged in to the Power point and also you had it plugged in to the U line. Now you are ready to begin the rest of the installation procedure.

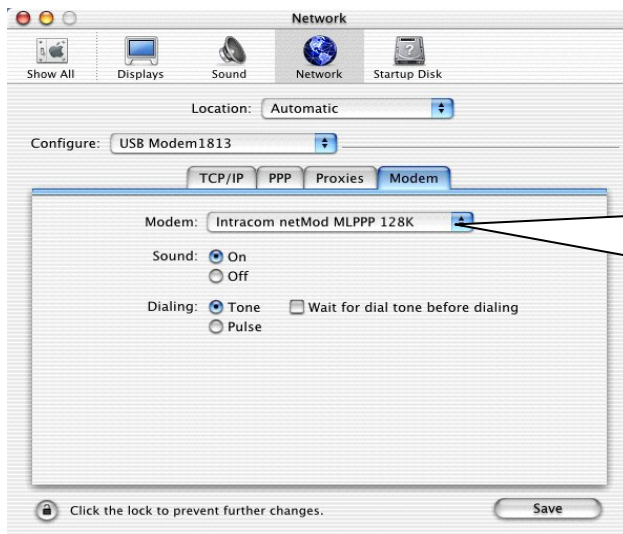


☞ From the dock panel choose the System preferences icon and go to “*Network*” settings.

Step 1. Modem Selection and setup.

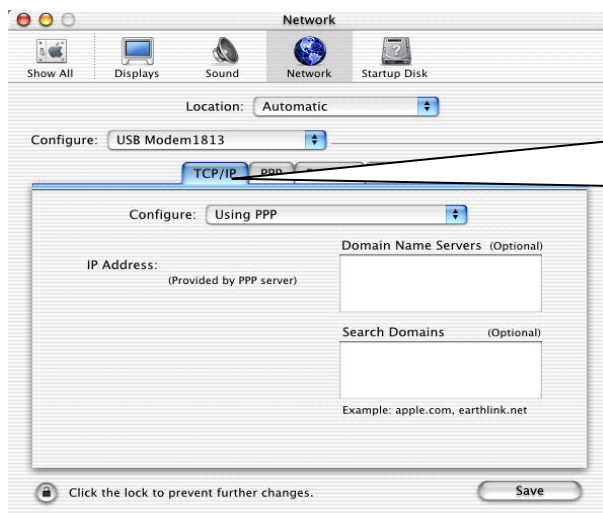
⇒ The next window will appears:



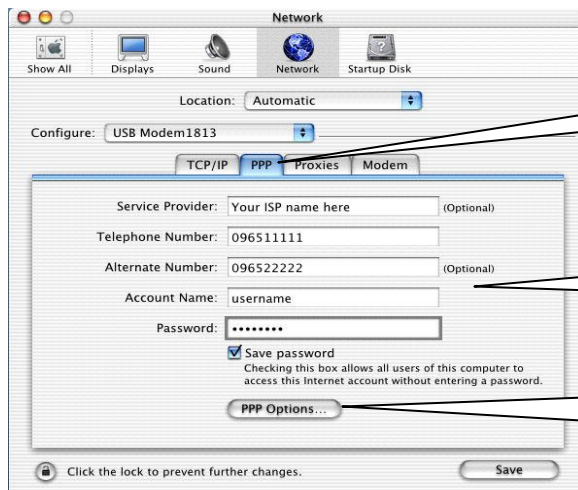


Select “*modem*” from the three scripts in the pull down list select “*Intracom netMod ML/PPP 128K*” or the script that suits best your requirements.

Step 2. TCP/IP and PPP settings.



Select “*TCP/IP*” the settings here are made automatically by most Internet Service Providers.

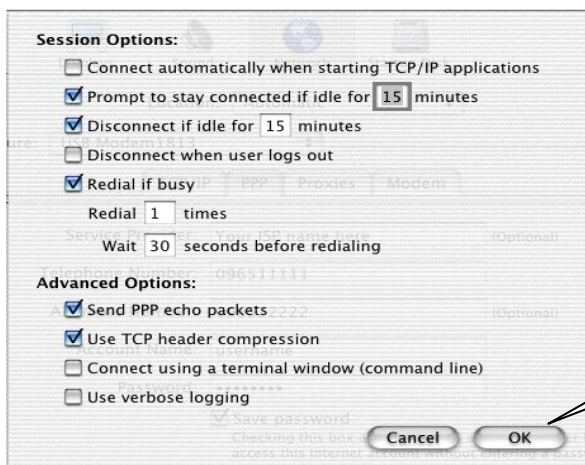


Select "PPP".

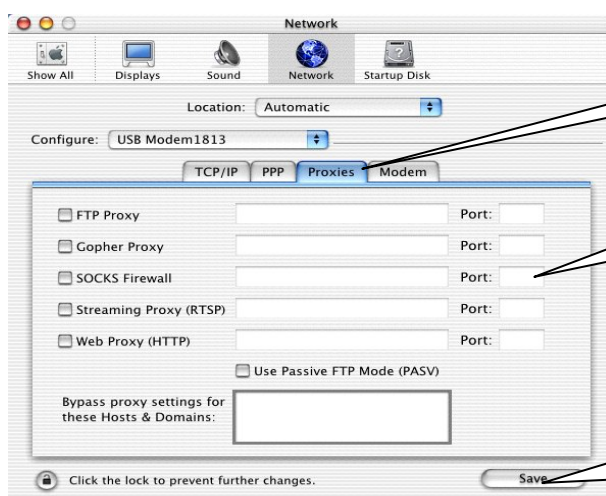
Enter all necessary data.

Click "PPP Options..." to continue.

⇒ The following window will appear



If you are not familiar with this program setting just click "OK" to terminate the "PPP Settings".



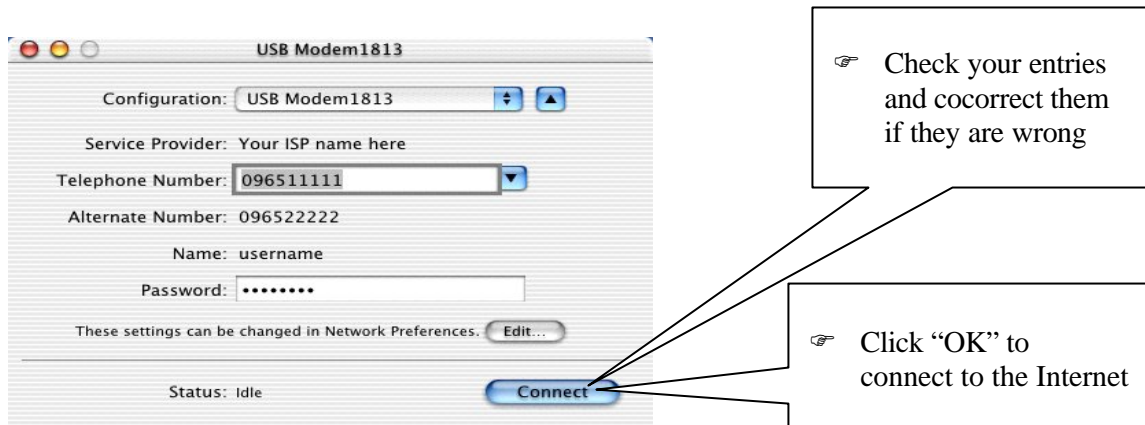
Select "Proxies".

Enter the "Proxy settings" if you want.

Click "save" to save your proxy configuration.

Step 3. Connect to the Internet

⇒ Select the folder “*Application*” and run the application “*Internet Connect*”. The following “*Main Deale’s*” windows appears:



⇒ The following window indicates that you are connected to the Internet. You can see all the informations refered on the status of your connection:

