



**INTRACOM**

**netMod**



netMod Installation for RS-232

**Windows<sup>®</sup> 2000**

## Table of Contents

Driver Installation Procedure in 8 steps.....	2
Step 1. Connecting netMod .....	2
Step 2. Startup.....	2
Step 3. Driver Selection.....	3
Step 4. Selection of download location.....	3
Step 5. Specify the driver directory.....	4
Step 6. Driver files found.....	4
Step 7. Digital Signature not found.....	5
Step 8. Complete Driver Installation.....	5
Check successful netMod installation in the Device Manager.....	6

## Driver Installation Procedure in 8 steps

### Step 1. Connecting netMod

- ☞ Connect netMod to the U line of the telephone network
  - ☞ Connect netMod to the AC mains power supply
  - ☞ Connect netMod to a free serial port (RS-232) of your PC with the *RS-232 cable* (⇒ Standard Accessories)
  - ☞ Turn on your PC (if your PC is running already, no restart is necessary)
- ⇒ *Windows®2000* automatically detects the *netMod* during startup and starts now the installation procedure with the following window:

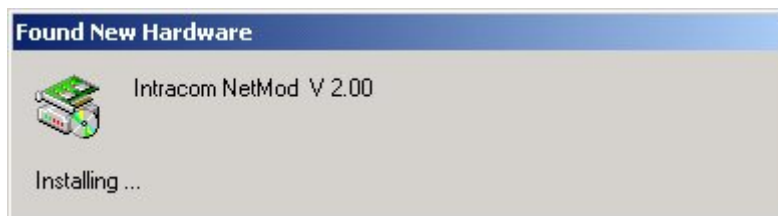


Figure 1 Found new Hardware Window

### Step 2. Startup



Figure 2 Found New Hardware Wizard – Window 1

### Step 3. Driver Selection

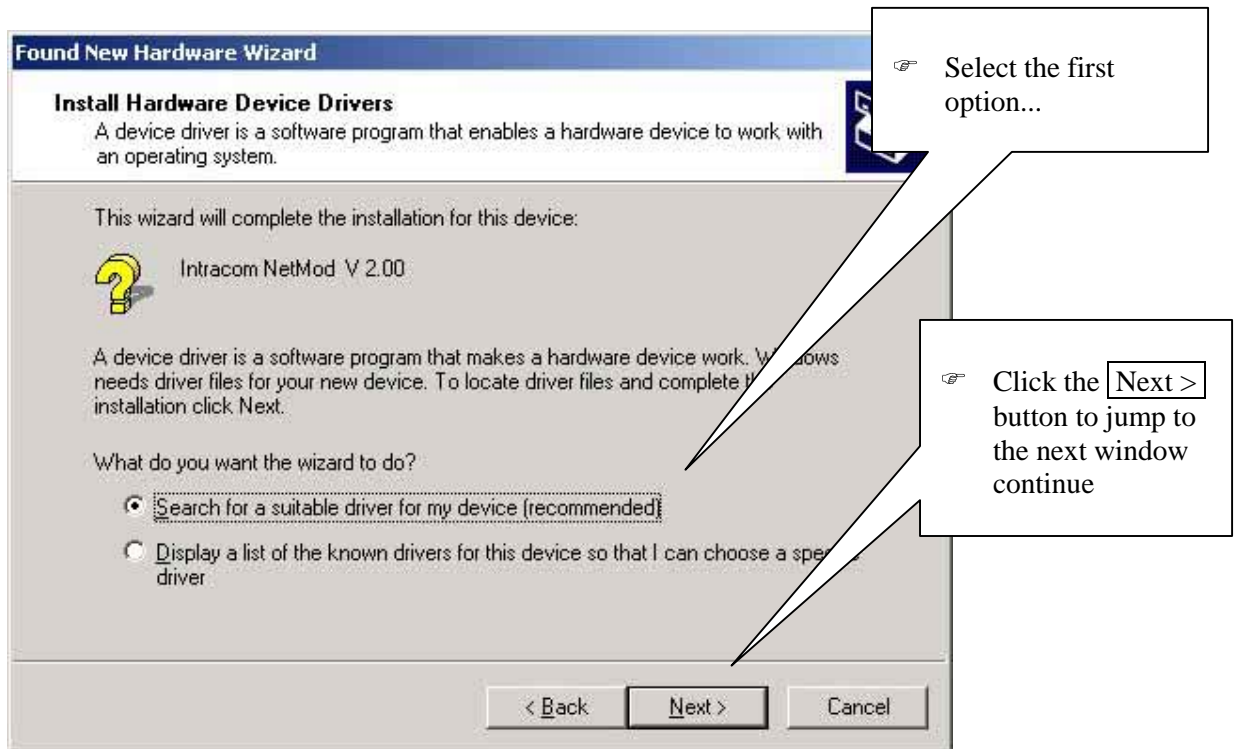


Figure 3 Found New Hardware Wizard – Window 2

### Step 4. Selection of download location

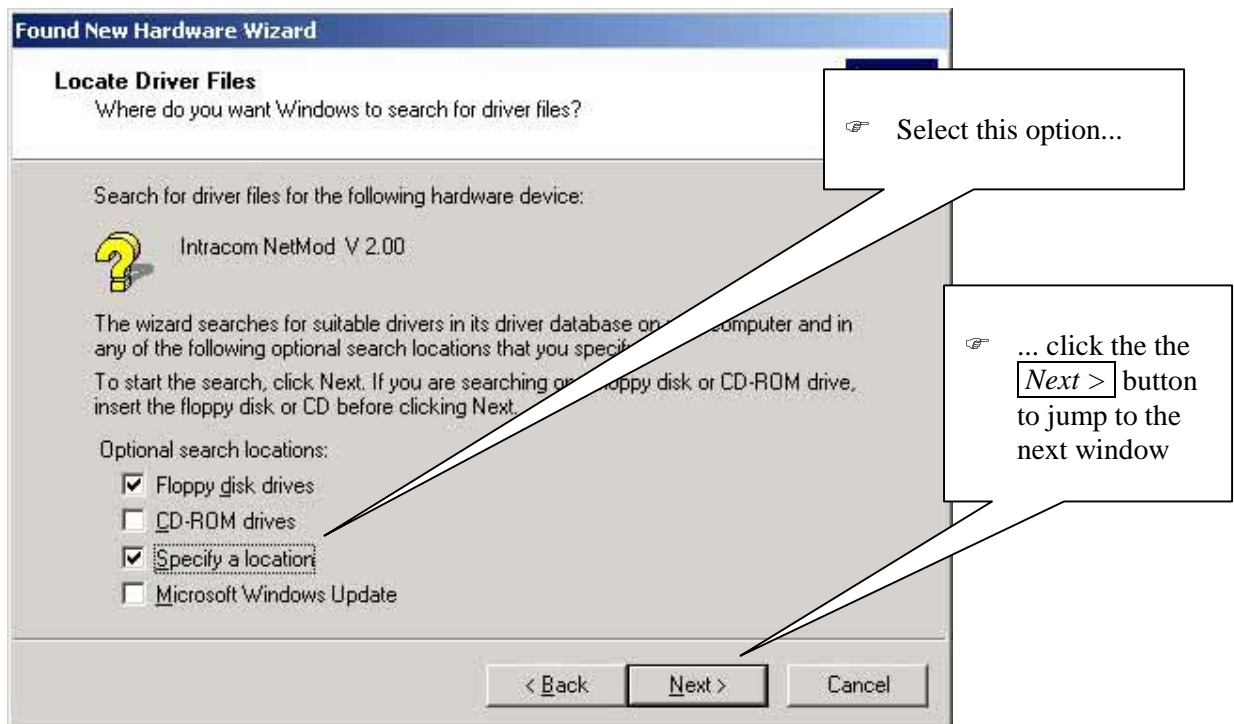


Figure 4 Found New Hardware Wizard – Window 3

### Step 5. Specify the driver directory

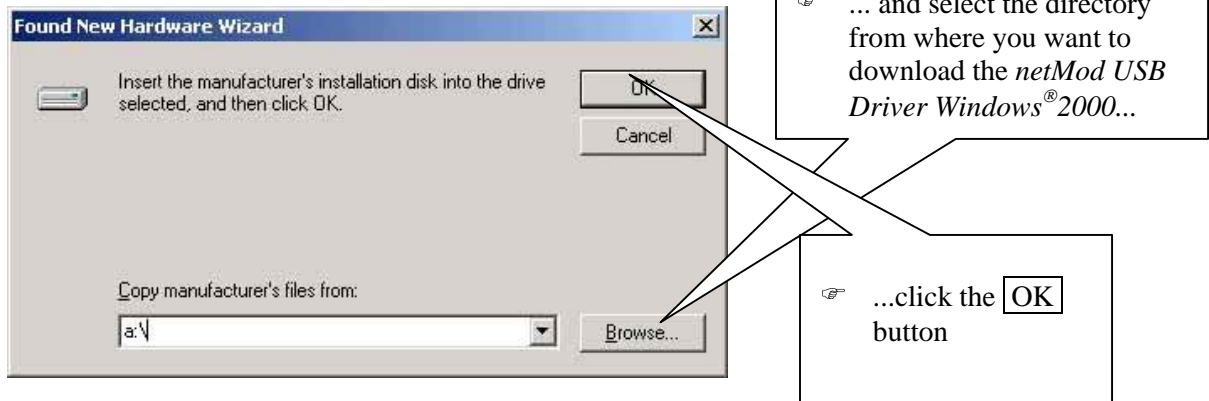


Figure 4 Found New Hardware Wizard – Window 3

### Step 6. Driver files found

The *Hardware Wizard* has found the *netMod Driver for Windows®2000* files

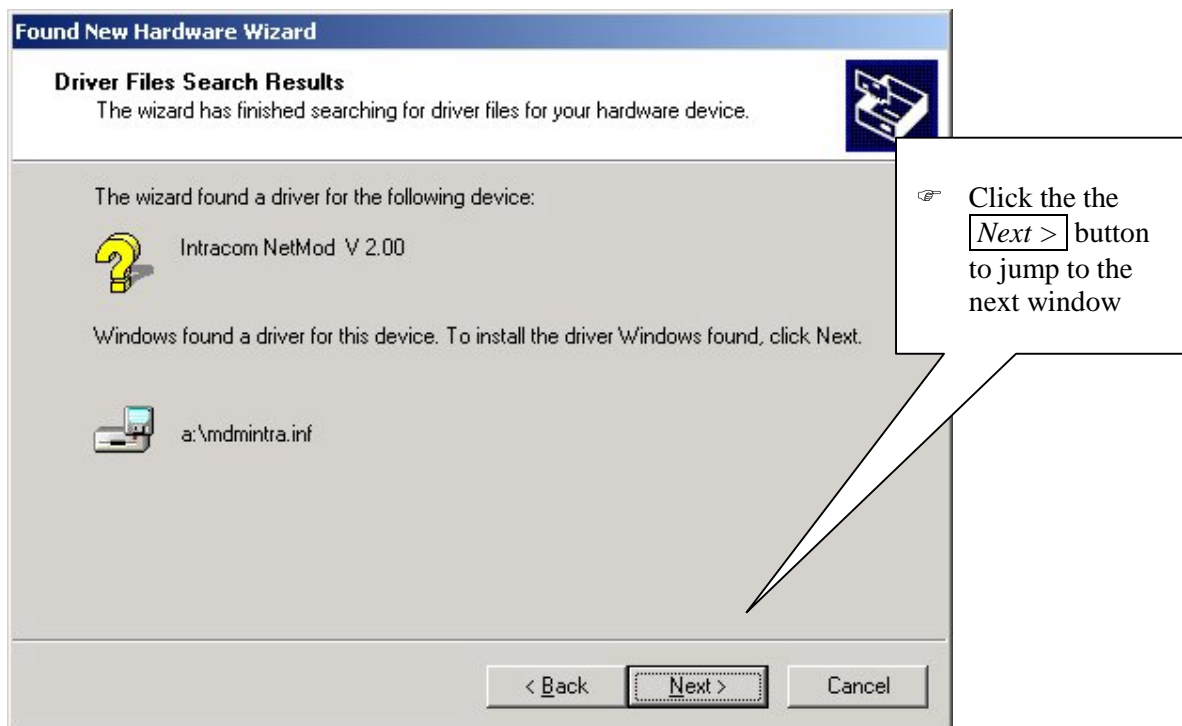


Figure 5 Found New Hardware Wizard – Window 4

### Step 7. Digital Signature not found

Since a Microsoft digital signature cannot be found the following window will appear.

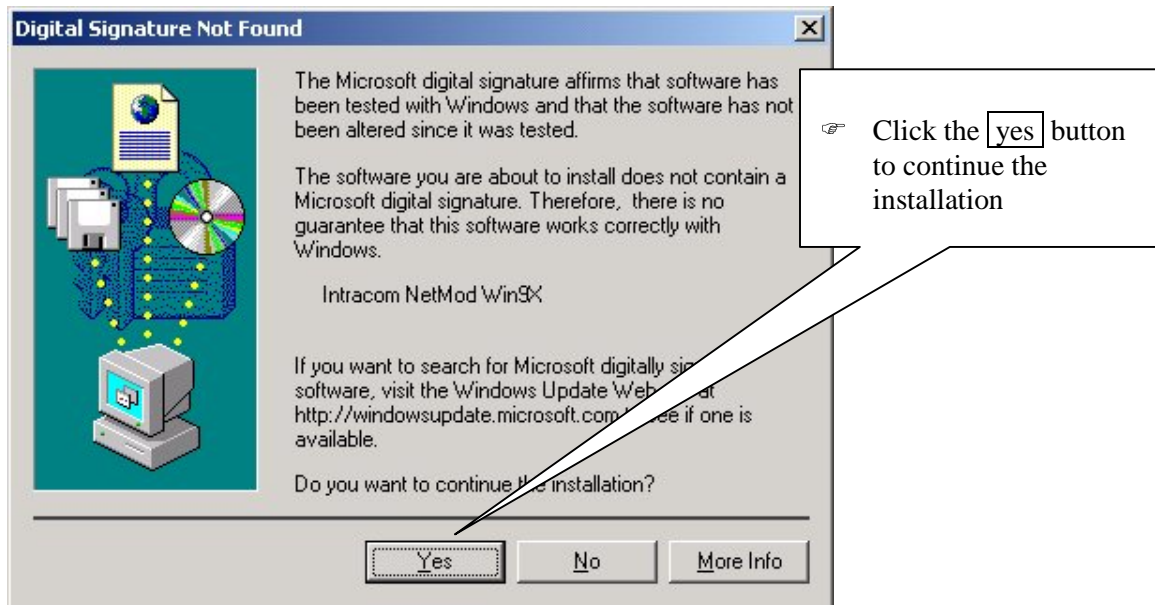


Figure 6 Digital Signature Not Found Window

### Step 8. Complete Driver Installation



Figure 7 Found New Hardware Wizard – Window 5

⇒ The installation process has finished.

## Check successful netMod installation in the Device Manager

! After successful installation the device *Intracom netMod* will appear in the *Device Manager* Window:

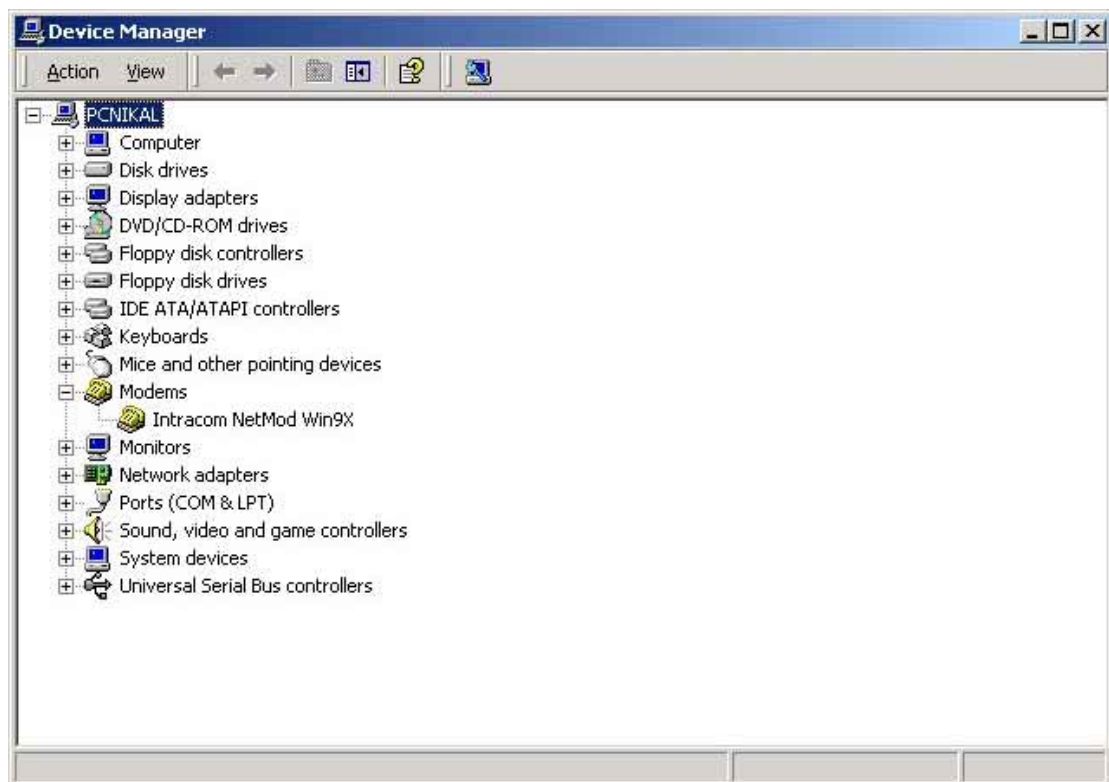


Figure 8 Device Manager Window