



INTRACOM

netMod



netMod USB Installation

Windows[®] 2000

Table of Contents

| | |
|---|---|
| Introduction | 2 |
| About USB..... | 2 |
| About netMod USB..... | 2 |
| Conventions used in this manual | 3 |
| Standard Accessories | 3 |
| Before Installation Procedure in 8 steps | 4 |
| Step 1 Connecting netMod..... | 5 |
| Step 2 Startup..... | 5 |
| Step 3 Driver Selection..... | 6 |
| Step 4 Selection of download location..... | 6 |
| Step 5 Specify the driver directory..... | 7 |
| Step 6 Driver files found..... | 7 |
| Step 7 Digital Signature not found..... | 8 |
| Step 8 Complete Driver Installation..... | 8 |
| Check successful netMod USB installation in the Device Manager..... | 9 |

Introduction

About USB...



USB (Universal Serial Bus) is a standard developed by computer and telecommunication industry for connection of peripheral devices to personal computers. USB devices offer high data rates and use a standard port and connector. They are configured automatically as soon as they are attached to the computer. No cards installation by opening the computer case is needed anymore. USB devices can be attached or removed while the computer is running. In the near future, USB port is going to replace the communication ports (like parallel, RS232 etc.).

About netMod USB



Figure 1 netMod USB

The *netMod USB* supports the Plug and Play functions of the USB standard and works with many operating systems such as *Windows®98*, *Windows®2000*, *Windows®ME*, Linux, MacOS.

The *netMod USB* has the same functions as the *netMod* for serial port connection.

Conventions used in this manual

☞ ... indicates instructions to be carried out by the user

⇒ ... indicates the results of instructions

! ... indicates notes or recommendations for the user

Names of devices, accessories, products etc. are written *italic*, e.g.: *netMod USB*

Text to be entered by the user is written ***italic bold***, e.g.: ***make xconfig*** <Enter ↵>

Keys to be pressed on the keyboard are depicted as <key>, e.g.: <Enter ↵>

Standard Accessories

- | | |
|--|---|
| 1. <i>netMod USB</i> | 5. <i>RS-232 cable</i> (serial cable) |
| 2. USB cable | 6. <i>Wall mounting Kit</i> |
| 3. <i>Serial Adapter</i> (DP-9 to DB-25) | 7. <i>netMod Manual</i> |
| 4. <i>RJ-11 cable</i> (for POTS) | <i>CD-ROM netMod Installation & Configuration</i> |



Figure 2 netMod USB Accessories

Before installation...

- ! Make sure that *Windows®2000* is installed on your PC
- ! Make sure that for the driver installation you have the *netMod USB Driver for Windows®2000* available on your PC or on CD or floppy disk.

You find the *netMod USB Driver for Windows®2000*....

- ... on the *CD-ROM netMod Installation & Configuration* (\Rightarrow Standard Accessories) in the folder *drivers*.

or:

- on the website *INTRACOM Helpdesk netMod* (<http://netmod.intracom.gr/>) from where you can download the driver files to your PC.

Driver Installation Procedure in 8 steps

Step 1. Connecting netMod

- ☞ Connect netMod to the U line of the telephone network
 - ☞ Connect netMod to the AC mains power supply
 - ☞ Connect netMod to a free USB port of your PC with the *USB cable* (⇒ Standard Accessories)
 - ☞ Turn on your PC (if your PC is running already, no restart is necessary)
- ⇒ *Windows®2000* automatically detects the *netMod USB* during startup and starts now the installation procedure with the following window:



Figure 3 Found new Hardware Window

Step 2. Startup

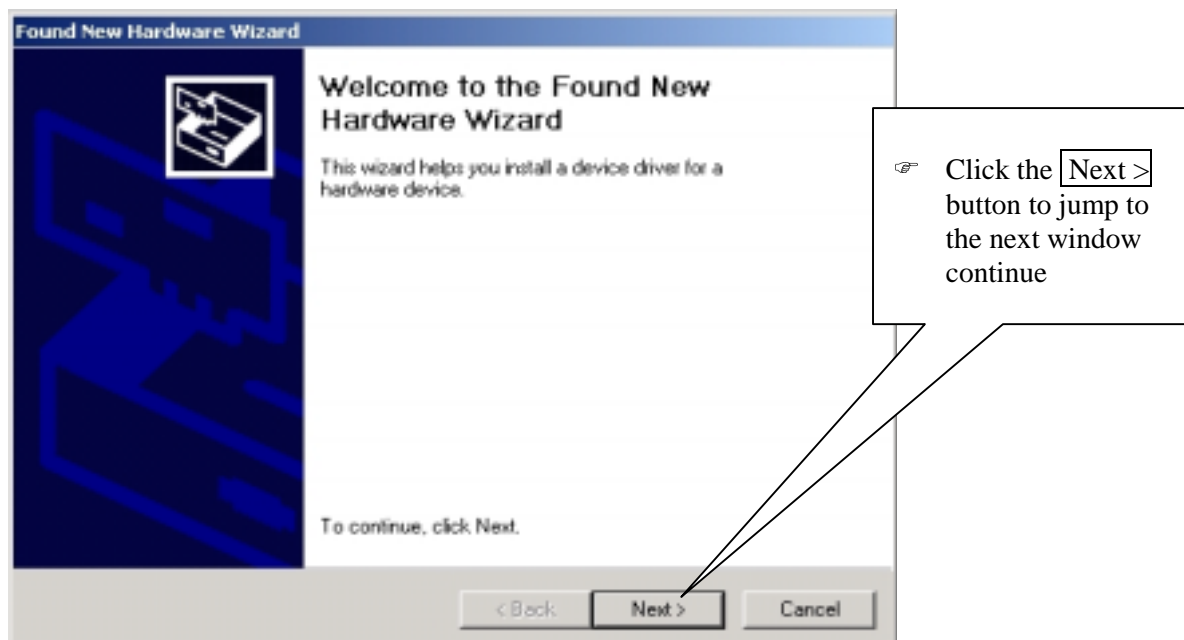


Figure 4 Found New Hardware Wizard – Window 1

Step 3. Driver Selection

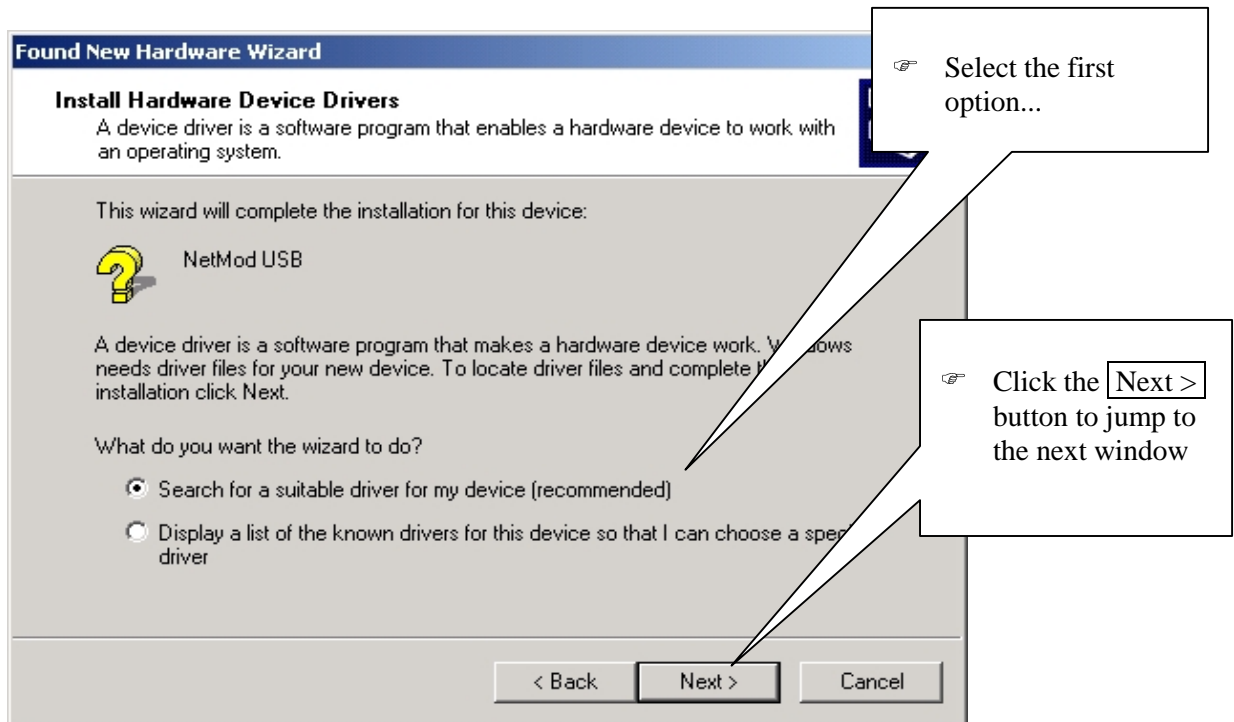


Figure 5 Found New Hardware Wizard – Window 2

Step 4. Selection of download location

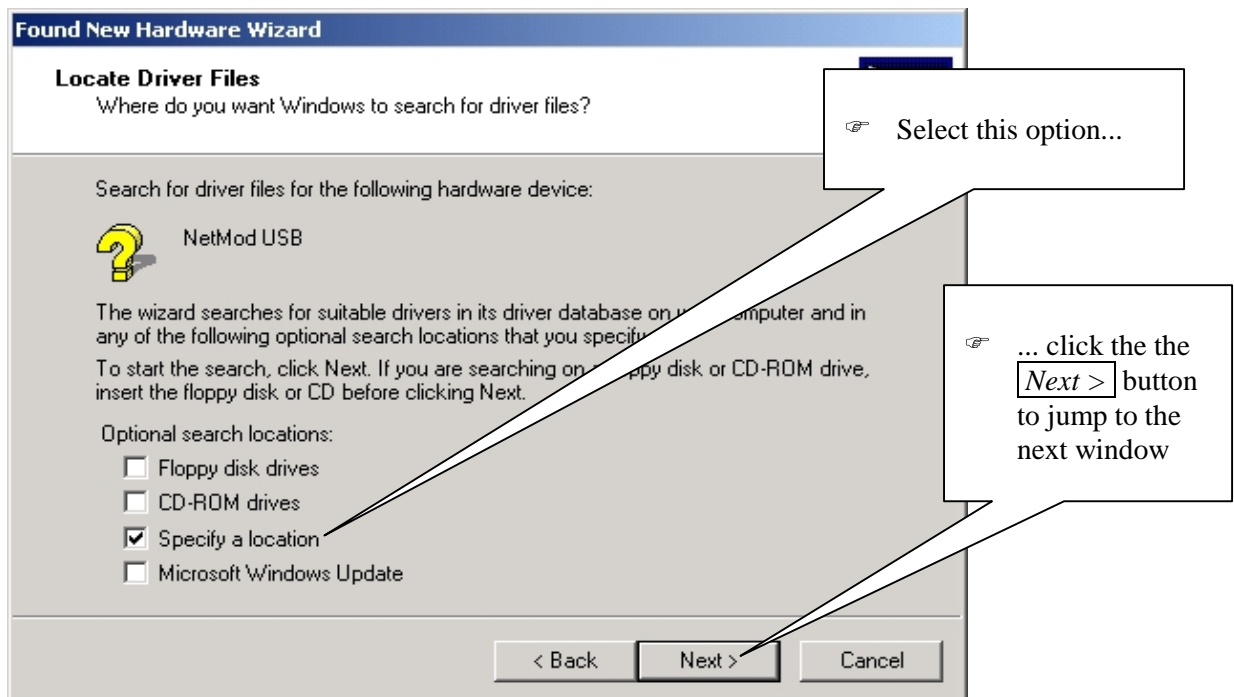
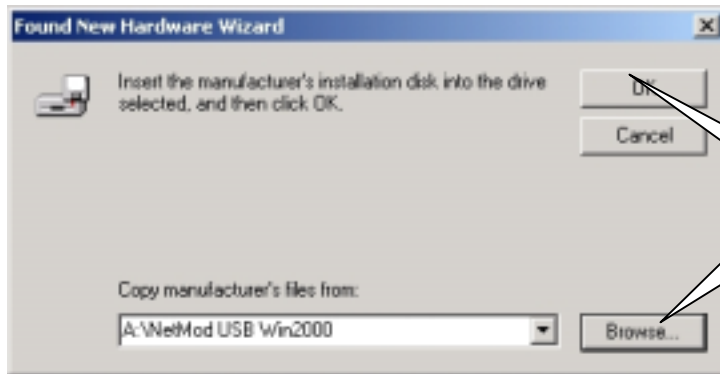


Figure 4 Found New Hardware Wizard – Window 3

Step 5. Specify the driver directory



Click the **Browse** button...

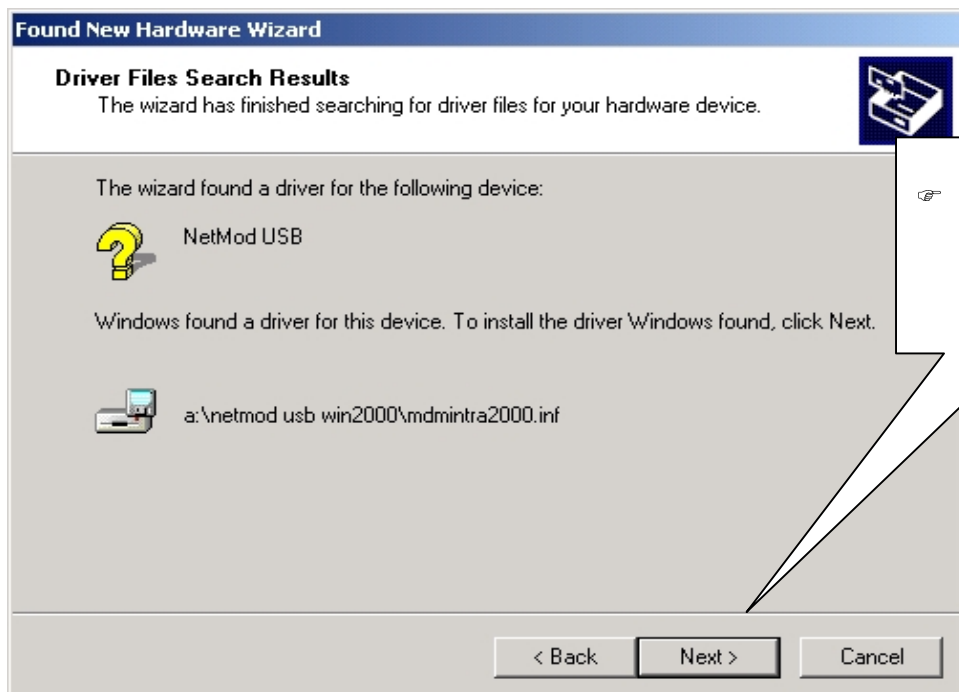
... and select the directory from where you want to download the *netMod USB Driver for Windows® 2000...*

...click the **OK** button

Figure 6 Found New Hardware Wizard – Window 3

Step 6. Driver files found

The *Hardware Wizard* has found the *netMod USB Driver for Windows® 2000* files



Click the the **Next >** button to jump to the next window

Figure 7 Found New Hardware Wizard – Window 4

Step 7. Digital Signature not found

Since a Microsoft digital signature cannot be found the following window will appear.

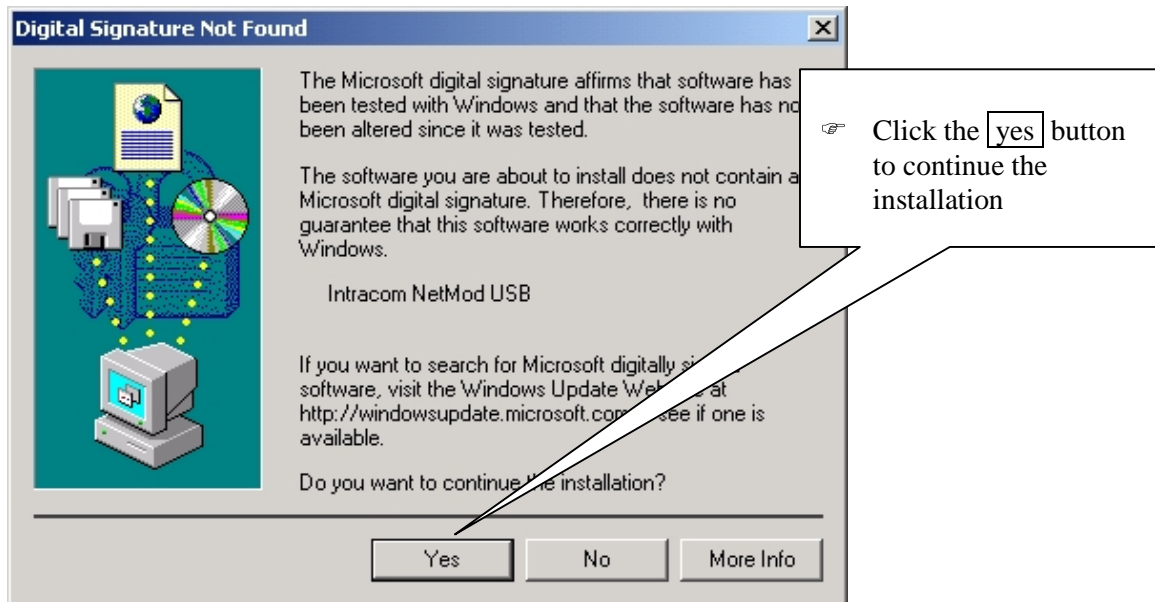


Figure 8 Digital Signature Not Found Window

Step 8. Complete Driver Installation

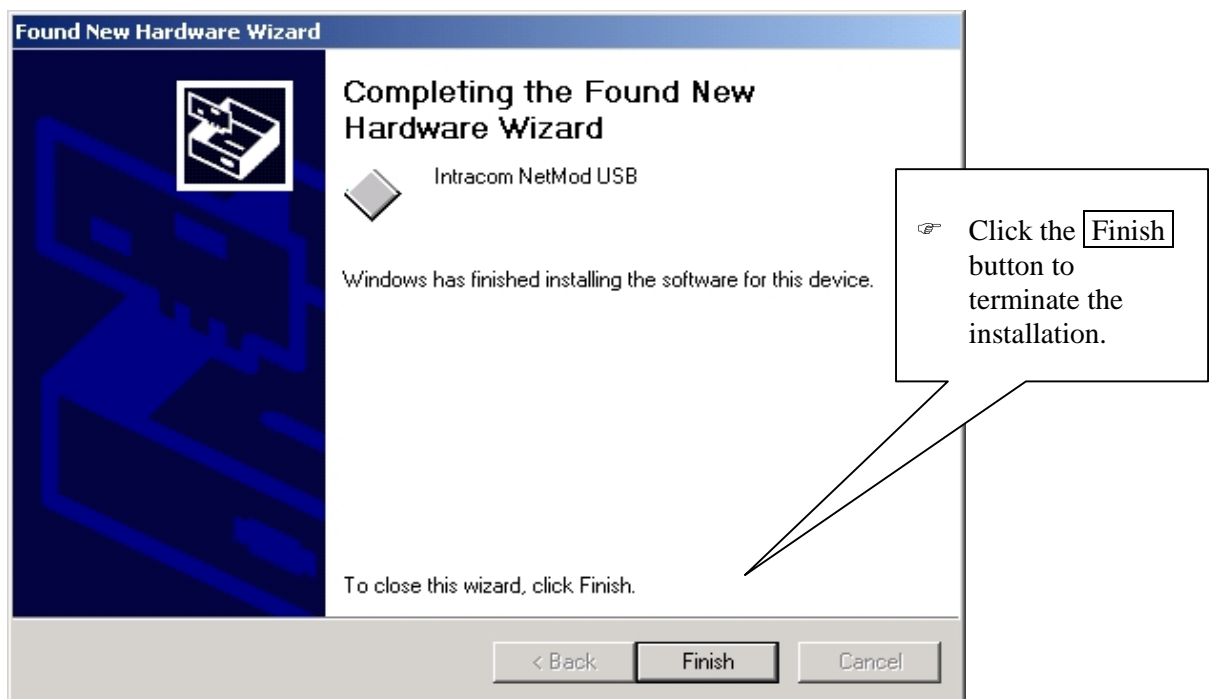


Figure 9 Found New Hardware Wizard – Window 5

⇒ The installation process has finished.

Check successful netMod USB installation in the Device Manager

! After successful installation the device *Intracom netMod USB* will appear in the *Device Manager* Window:

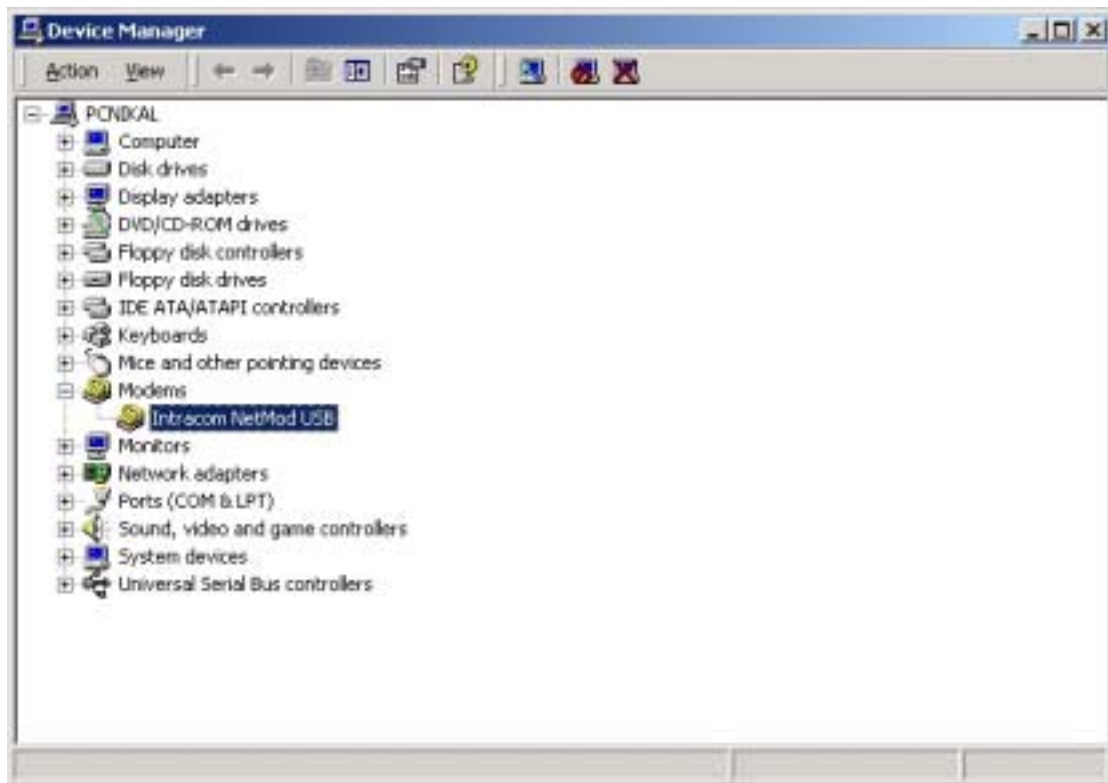


Figure 10 Device Manager Window