



INTRACOM

netMod



netMod USB Installation

Windows[®] 98

Table of Contents

Introduction.....	2
About USB.....	2
About netMod USB.....	2
Conventions used in this manual	3
Standard Accessories	3
Driver Installation Procedure in 8 steps	4
Step 1 Connecting netMod.....	5
Step 2 Startup.....	5
Step 3 Driver Selection.....	6
Step 4 Selection of download location.....	6
Step 5 Driver files found	7
Step 6 Verification of installation start	7
Step 7 Driver Copy Process.....	8
Step 8 netMod USB modem driver installation.....	8
Check successful netMod USB installation in the Device Manager.....	9

Introduction

About USB...



USB (Universal Serial Bus) is a standard developed by computer and telecommunication industry for connection of peripheral devices to personal computers. USB devices offer high data rates and use a standard port and connector. They are configured automatically as soon as they are attached to the computer. No cards installation by opening the computer case is needed anymore. USB devices can be attached or removed while the computer is running. In the near future, USB port is going to replace the communication ports (like parallel, RS232 etc.).

About netMod USB



Figure 1 netMod USB

The *netMod USB* supports the Plug and Play functions of the USB standard and works with many operating systems such as *Windows®98*, *Windows®2000*, *Windows®ME*, Linux, MacOS.

The *netMod USB* has the same functions as the *netMod* for serial port connection.

Conventions used in this manual

☞ ... indicates instructions to be carried out by the user

⇒ ... indicates the results of instructions

! ... indicates notes or recommendations for the user

Names of devices, accessories, products etc. are written *italic*, e.g.: *netMod USB*

Text to be entered by the user is written *italic bold*, e.g.: ***make xconfig*** <Enter ↵>

Keys to be pressed on the keyboard are depicted as <key>, e.g.: <Enter ↵>

Standard Accessories

- | | |
|--|---|
| 1. <i>netMod USB</i> | 5. <i>RS-232 cable</i> (serial cable) |
| 2. <i>USB cable</i> | 6. <i>Wall mounting Kit</i> |
| 3. <i>Serial Adapter</i> (DP-9 to DB-25) | 7. <i>netMod Manual</i> |
| 4. <i>RJ-11 cable</i> (for POTS) | <i>CD-ROM netMod Installation & Configuration</i> |



Figure 2 netMod USB Accessories

Before installation...

- ! Make sure that *Windows*[®]98 is installed on your PC
- ! Make sure that for the driver installation you have the *netMod USB Driver for Windows*[®]98 available on your PC or on CD or floppy disk.

You find the *netMod USB Driver for Windows*[®]98...

- ... on the *CD-ROM netMod Installation & Configuration* (\Rightarrow Standard Accessories) in the folder *drivers*.

or:

- on the website *INTRACOM Helpdesk netMod* (<http://netmod.intracom.gr/>) from where you can download the driver files to your PC.

Driver Installation Procedure in 8 steps

Step 1. Connecting netMod

- ☞ Connect netMod to the U line of the telephone network
 - ☞ Connect netMod to the AC mains power supply
 - ☞ Connect netMod to a free USB port of your PC with the *USB cable* (⇒ Standard Accessories)
 - ☞ Turn on your PC (if your PC is running already, no restart is necessary)
- ⇒ *Windows*®98 automatically detects the *netMod USB* during startup and starts now the installation procedure.

Step 2. Startup

During the startup the computer reports that new hardware was found and starts the installation procedure with the *Add New Hardware Wizard* window:

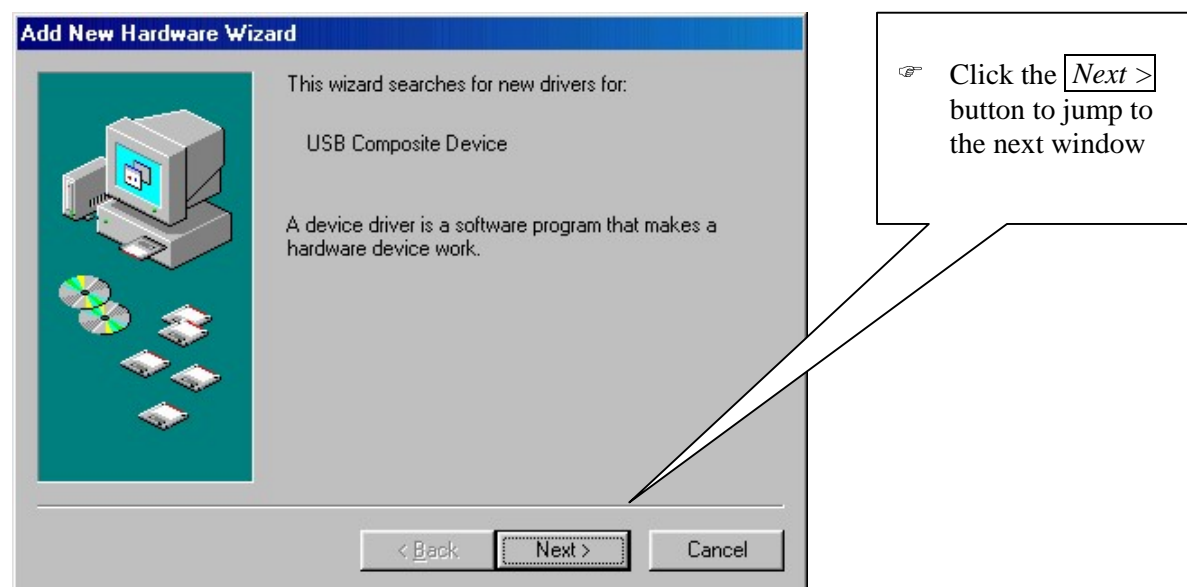


Figure 3 Add New Hardware Wizard – Window 1

Step 3. Driver Selection

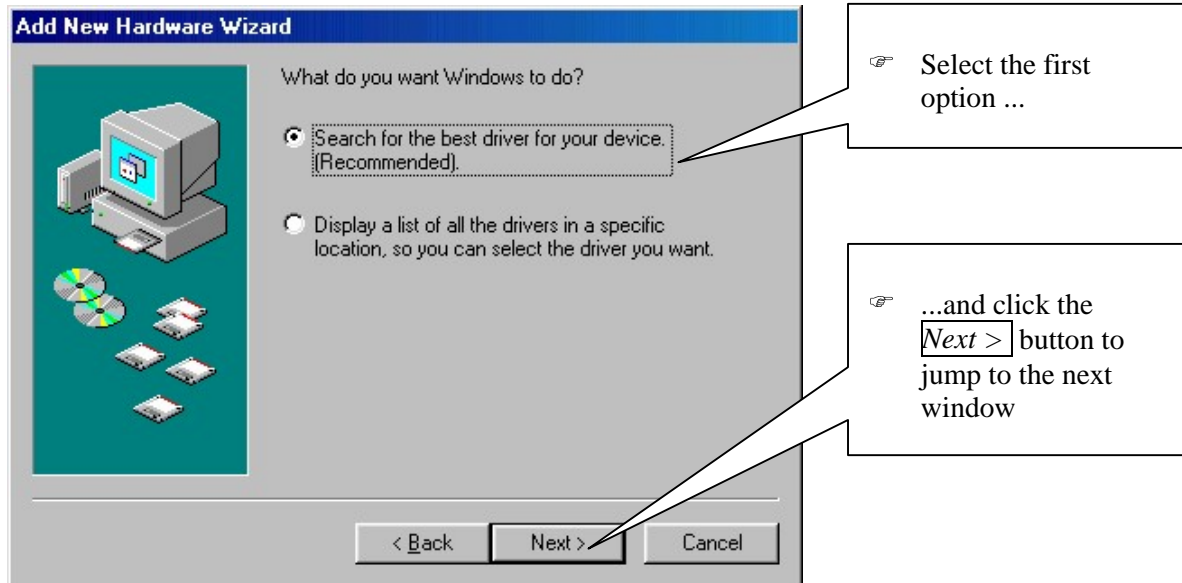


Figure 4 Add New Hardware Wizard – Window 2

Step 4. Selection of download location

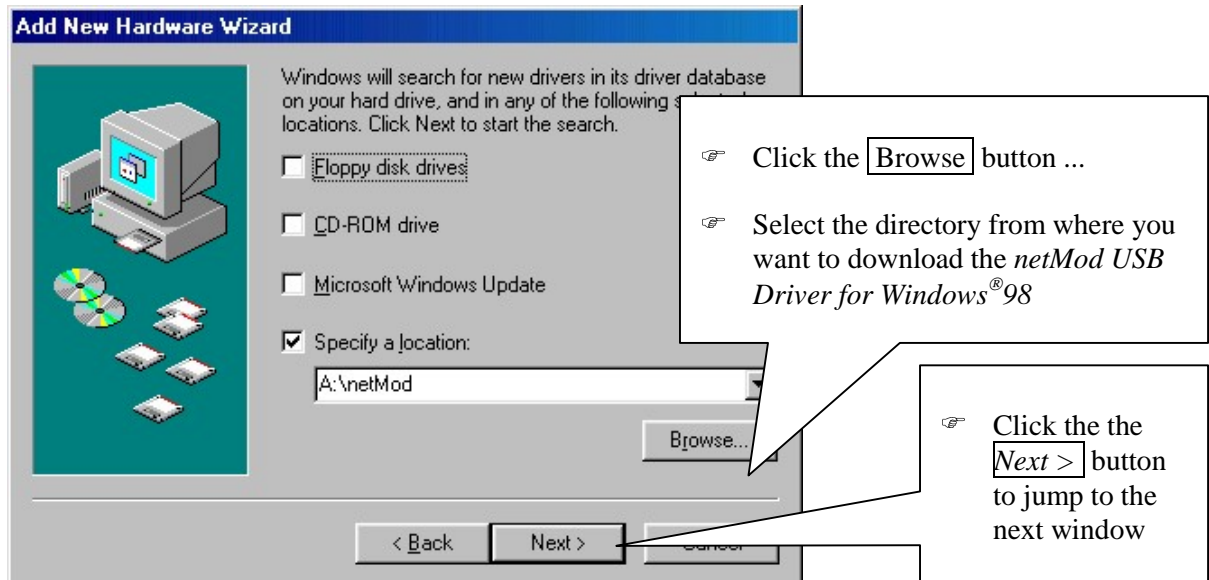


Figure 5 Add New Hardware Wizard – Window 3

Step 5. Driver files found

The Hardware Wizard has found the netMod USB Driver for Windows® 98 files

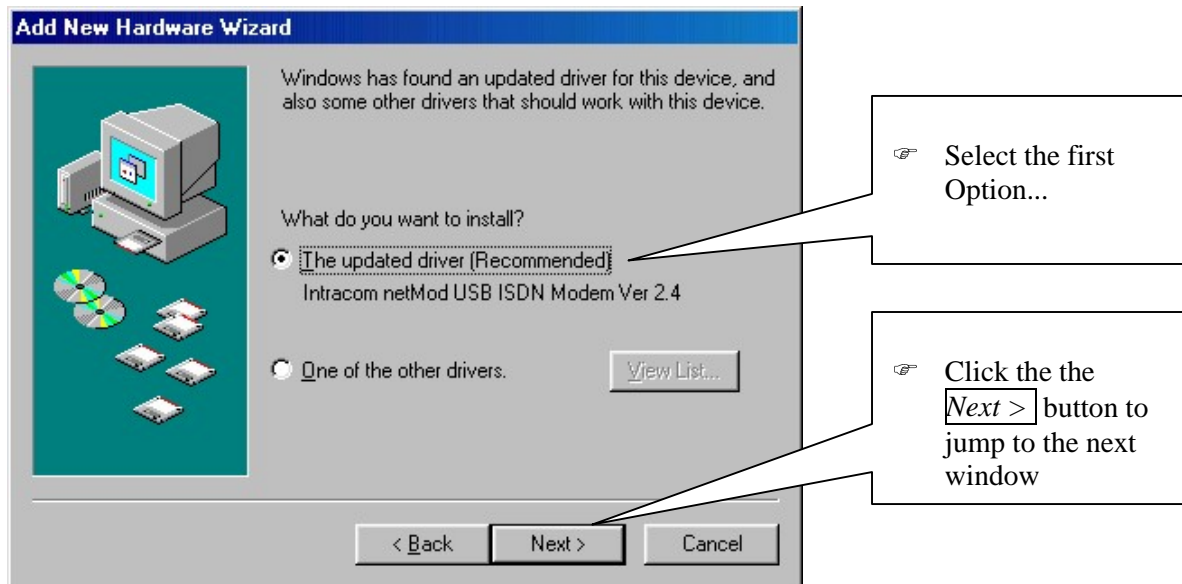


Figure 6 Add New Hardware Wizard – Window 4

Step 6. Verification of installation start

The *Hardware Wizard* asks now for verification of the selected driver file

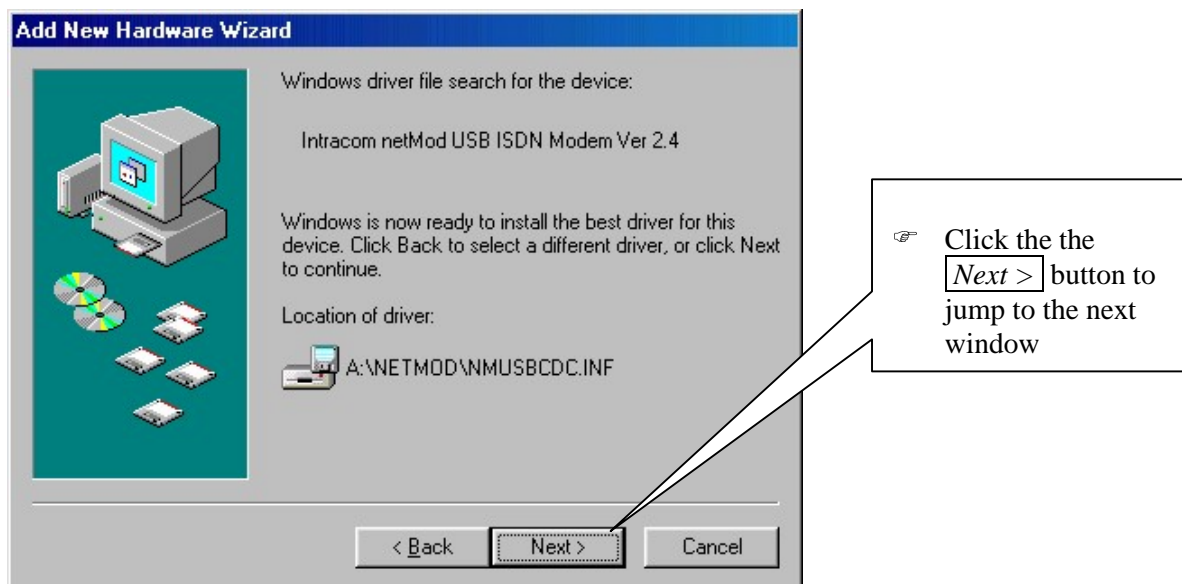


Figure 7 Add New Hardware Wizard – Window 5

⇒ The copying procedure of the *netMod USB Driver* file is running now.

Step 7. *Driver Copy Process*

The netMod USB Driver file has been copied.

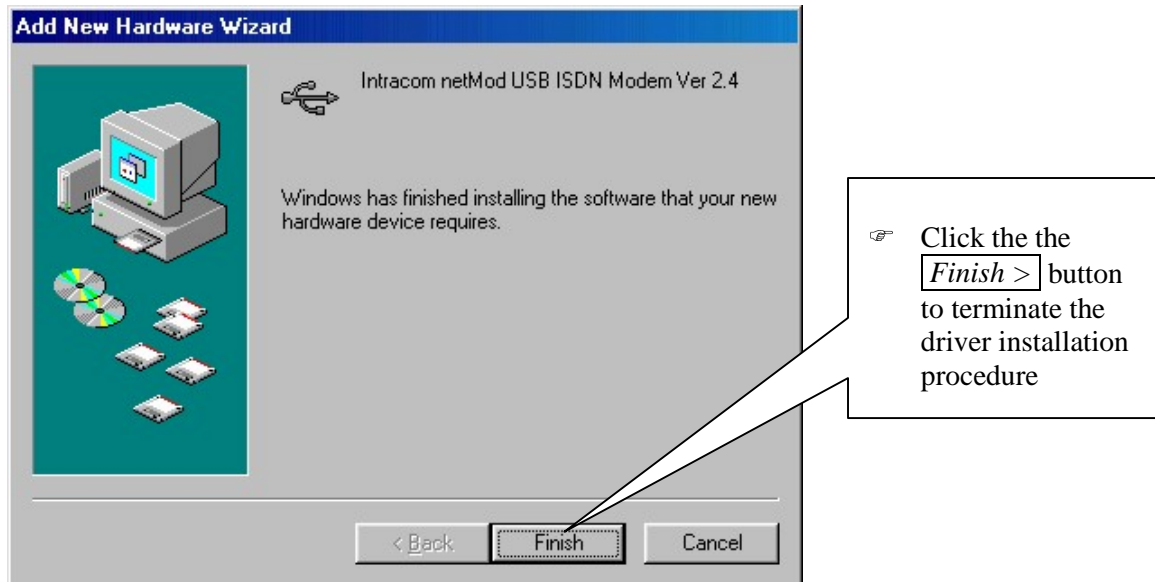


Figure 8 Add New Hardware Wizard – Window 6

Step 8. *netMod USB modem driver installation*

The following window will appear on your screen, showing you that the *netMod USB* modem driver is now installed by the system:



Figure 9 New Hardware Found Window

Check successful netMod USB installation in the Device Manager

! After successful installation the device *Intracom netMod USB* will appear in the *Device Manager* Window:

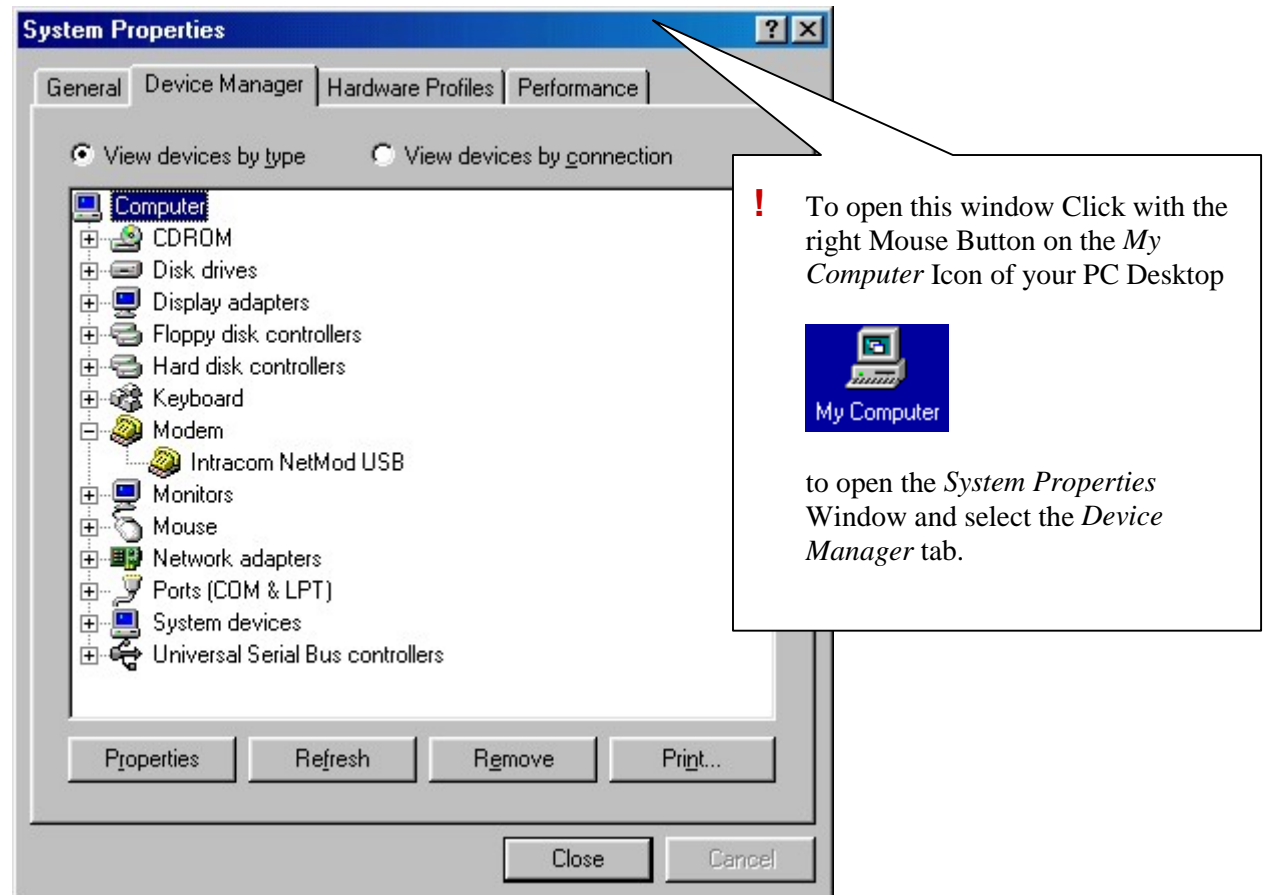


Figure 10 System Properties Window