



**INTRACOM**

**netMod**



**netMod USB Installation**

**Windows<sup>®</sup> XP**

## Table of Contents

Introduction.....	2
Conventions used in this manual. ....	3
Standard Accessories .....	3
Before Installation .....	4
Installation Procedure in 6 steps. ....	5
Step 1 Connecting netMod .....	5
Step 2 Startup .....	6
Step 3 Driver Selection .....	6
Step 4 Selection of download location .....	7
Step 5 Certification Message.....	7
Step 6 Driver files found .....	8
Check successful netMod USB installation in the Device Manager .....	9

## Introduction

### About USB...



USB (Universal Serial Bus) is a standard developed by computer and telecommunication industry for connection of peripheral devices to personal computers. USB devices offer high data rates and use a standard port and connector. They are configured automatically as soon as they are attached to the computer. No cards installation by opening the computer case is needed anymore. USB devices can be attached or removed while the computer is running. In the near future, USB port is going to replace the communication ports (like parallel, RS232 etc.).

### About netMod USB




Figure 1 netMod USB

The *netMod USB* supports the Plug and Play functions of the USB standard and works with many operating systems such as *Windows®98*, *Windows®2000*, *Windows®ME*, *Windows®XP*, *Linux*, *MacOS*.

The *netMod USB* has the same functions as the *netMod* for serial port connection.

## Conventions used in this manual

 ... indicates instructions to be carried out by the user

⇒ ... indicates the results of instructions

**!** ... indicates notes or recommendations for the user

Names of devices, accessories, products etc. are written *italic*, e.g.: *netMod USB*

Text to be entered by the user is written *italic bold*, e.g.: ***make xconfig*** <Enter ↵>

Keys to be pressed on the keyboard are depicted as <**key**>, e.g.: <**Enter** ↵>

## Standard Accessories

- |  |   |
|--|---|
| 1. <i>netMod USB</i>                     | 5. <i>RS-232 cable</i> (serial cable)                 |
| 2. USB cable                             | 6. <i>Wall mounting Kit</i>                           |
| 3. <i>Serial Adapter</i> (DP-9 to DB-25) | 7. <i>netMod Manual</i>                               |
| 4. <i>RJ-11 cable</i> (for POTS)         | <i>CD-ROM netMod Installation &amp; Configuration</i> |



Figure 2 netMod USB Accessories

## Before installation...

- ! Make sure that *Windows®XP* is installed on your PC
- ! Make sure that for the driver installation you have the *netMod USB Driver for Windows®XP* available on your PC or on CD or floppy disk.

You find the *netMod USB Driver for Windows®XP*....

- ... on the *CD-ROM netMod Installation & Configuration* (⇒ Standard Accessories) in the folder *drivers*.

**or:**

- on the website *INTRACOM Helpdesk netMod* (<http://netmod.intracom.gr/>) from where you can download the driver files to your PC.

## Driver Installation Procedure in 6 steps

### Step 1. Connecting *netMod*

- ☞ Connect *netMod* to the U line of the telephone network
  - ☞ Connect *netMod* to the AC mains power supply
  - ☞ Connect *netMod* to a free *USB* port of your PC with the *USB cable* (⇒ Standard Accessories)
  - ☞ Turn on your *PC* (if your *PC* is running already, no restart is necessary)
- ⇒ *Windows®XP* automatically detects the *netMod USB* during startup and starts now the installation procedure with the following window:



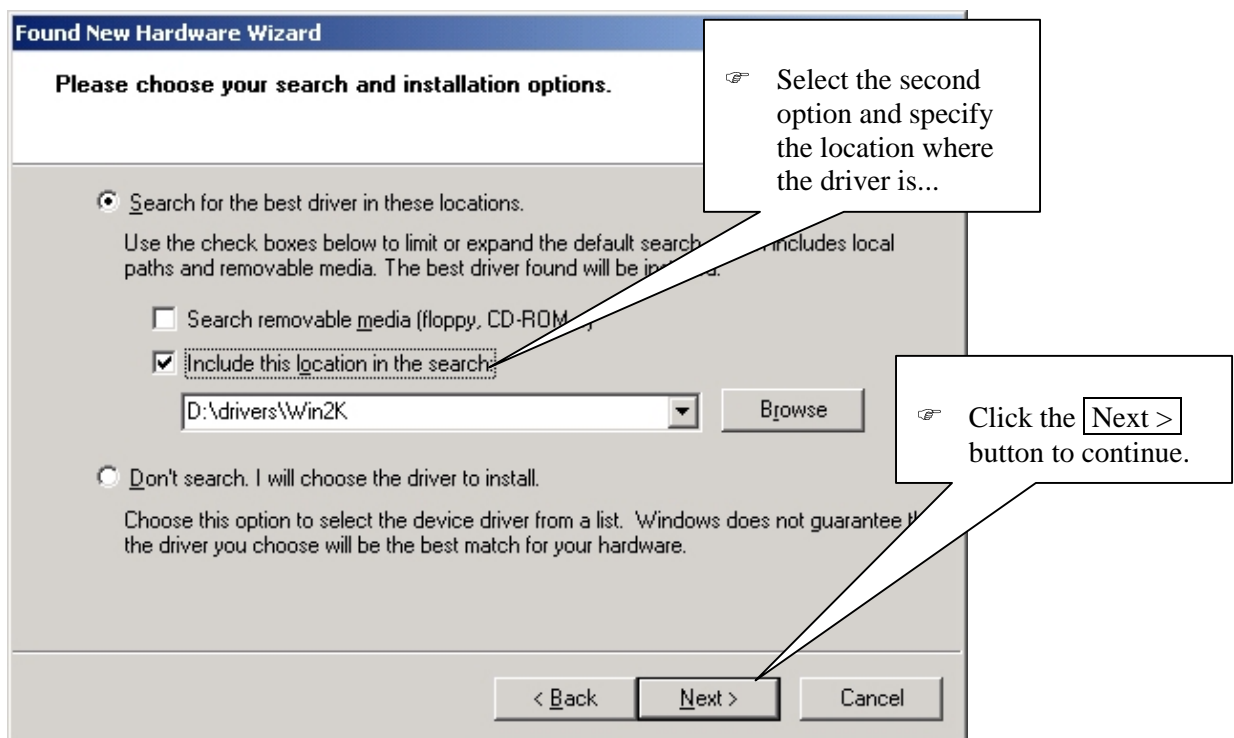
- ☞ Choose the option “Install from a list or specific location (Advanced)” and...

## Step 2. Startup

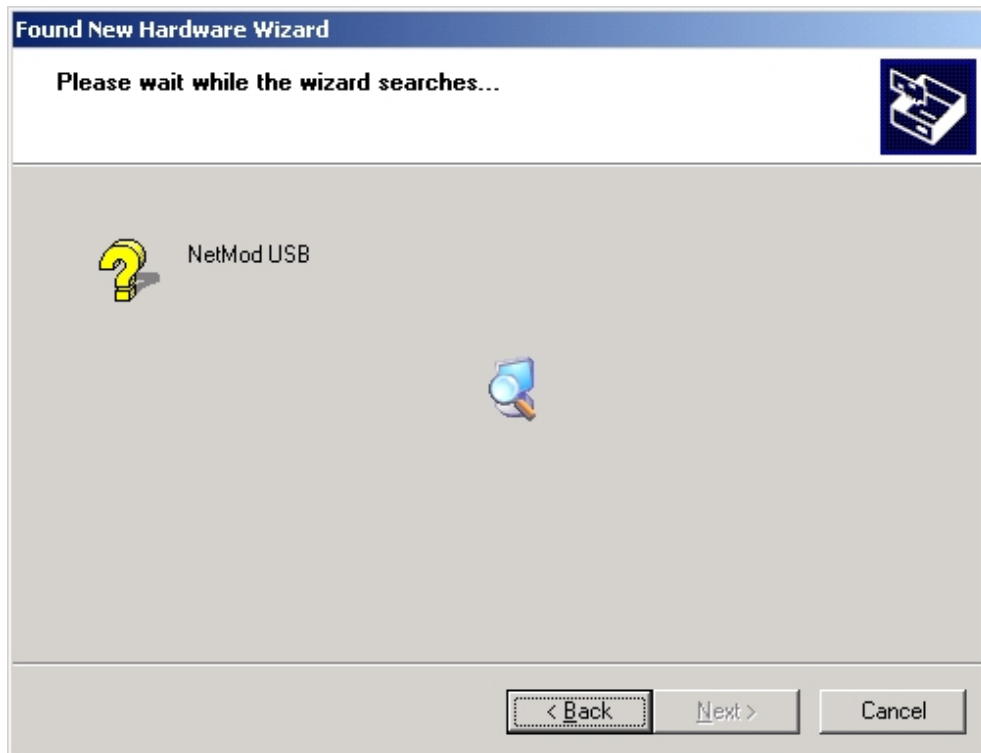


## Step 3. Driver Selection

In the next window...

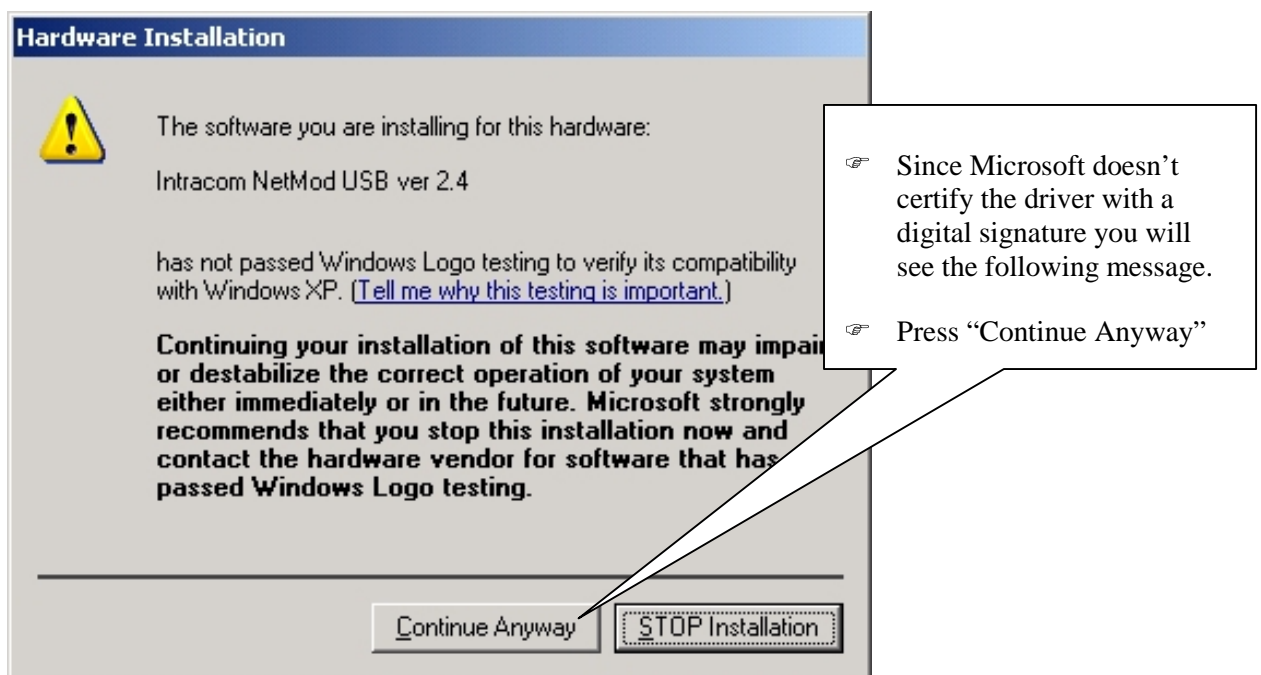


#### Step 4. Selection of download location



! Windows now search the appropriate driver file. The next window appears on your screen...

#### Step 5. Certification Message.



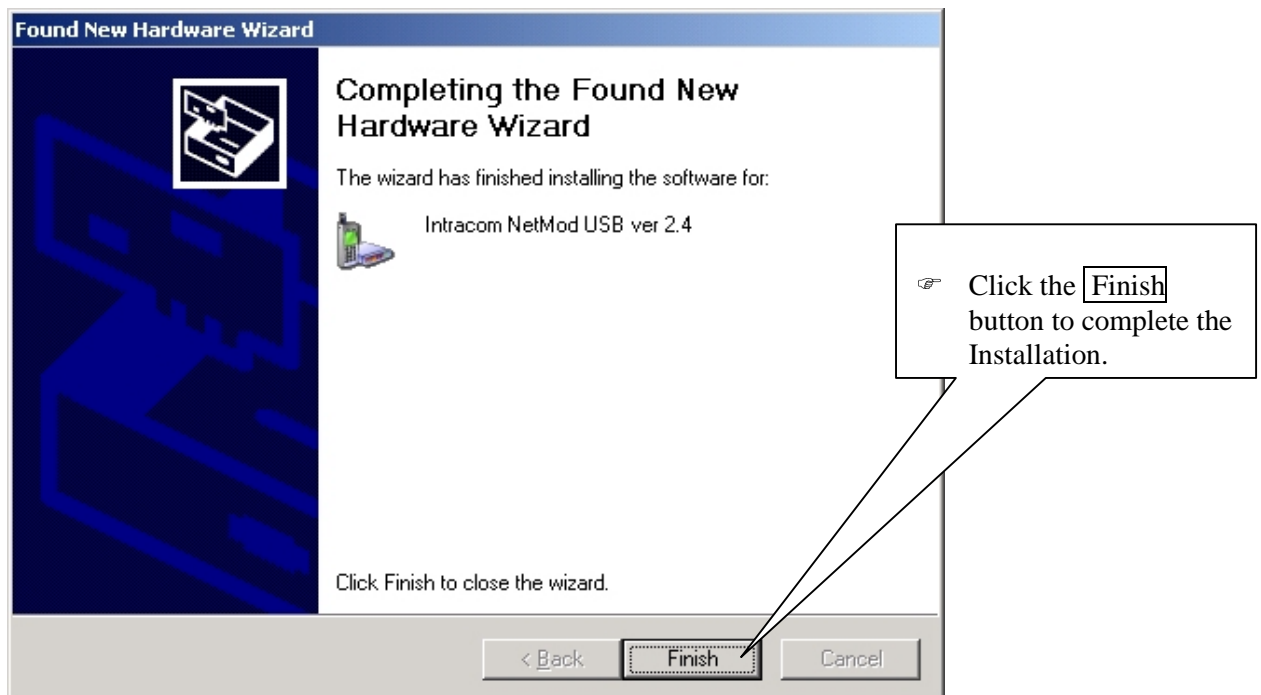


## Step 6. Driver files found

⇒ The Hardware Wizard has found the *netMod* Driver for *Windows® XP* files...



...and copies the driver.



### ***Check successful netMod installation in the Device Manager***

⇒ After successful installation the device *Intracom netMod USB ver 2.4* will appear in the *device Manager Window*.

